

## H-ITT SoftClick Users Guide

SoftClick makes educational assessment simple using your web enabled device such as your cell phone, PDA or computer. Because SoftClick is web based, you will need to have a good internet connection when using SoftClick to send in your answers.

You can purchase a SoftClick license key at H-ITT's secure on-line store; follow the links from the Online Store at the top right at [h-itt.com](http://h-itt.com)

After you have purchased a SoftClick license key, go to <http://www.h-ittsoftclick.com> to set up your SoftClick account. First time users will need to sign up for an account using their license key.

The SoftClick Login screen will appear.



The login screen features a blue header with the text "SoftClick". Below the header, it says "H-ITT's SoftClick Login". There are two input fields: "Email:" and "Password:". A blue "Login" button is positioned below the password field. At the bottom, there are two links: "Need an account? Sign up [Here.](#)" and "Lost your password? [Click Here.](#)". The footer contains the text "© 2009 H-ITT LCC • [Full Site](#)".

Click here to get to the registration screen



The registration screen has a blue header with "SoftClick". It contains several input fields: "First Name:", "Last Name:", "Email:", "Password:", "Confirm Password:", and "License Key:". A blue "Register" button is located below the license key field. There is also a "Help" link and the footer text "© 2009 H-ITT LCC • [Full Site](#)".

Complete the information requested and click **Register**

- The password can be letters and/or numbers, and should be at least 5 characters long.
- Remember this password as you will need this to log in and join H-ITT sessions.
- The License key is 16 characters with no spaces. Valid characters are 0 through 9 and A through F.
- If you enter any information incorrectly an error message will appear leading you to the field that resulted in the error.

Upon successful registration you will see this screen.

You can login now to use SoftClick for a H-ITT session, or log in later as discussed below.



The registration success screen has a blue header with "SoftClick". It displays "Registration Successful" in blue text. Below this, it says "Click [here](#) to login." and includes a "Help" link. The footer text is "© 2009 H-ITT LCC • [Full Site](#)".

## Logging in to join a H-ITT session.

Go to <http://www.h-ittsoftclick.com/>

Enter your email and password and click **Login**

The SoftClick application sends your answers to a web database. The confirmation given to you by SoftClick (i.e. the green **OK** at the top of the answer pallet) is only confirmation that your answer was received by the web site; **THIS IS NOT CONFIRMATION** that your answer was received by your instructor. The H-ITT Acquisition program (used by your instructor in the classroom) will display your ID box, **then giving you confirmation** that your answer was received by the program.

Your answers will not be received if you enter the wrong session or homework ID, or select the wrong remote mode.

*It is your responsibility to make sure you are logged into the correct session or homework ID and have selected the correct remote mode.*



### 1. Enter the session or Homework ID:

Only active session or homework ID's can be used. If you mistype or use an invalid ID, when you press go, the ID box clears prompting for a valid session or homework ID.

### 2. Select the Remote mode:

Multiple Choice is the most common remote mode, however your instructor may use other question types that require different remote modes as described below.

### 3. Click **Go**

See the [User Information](#) section for details on these important items

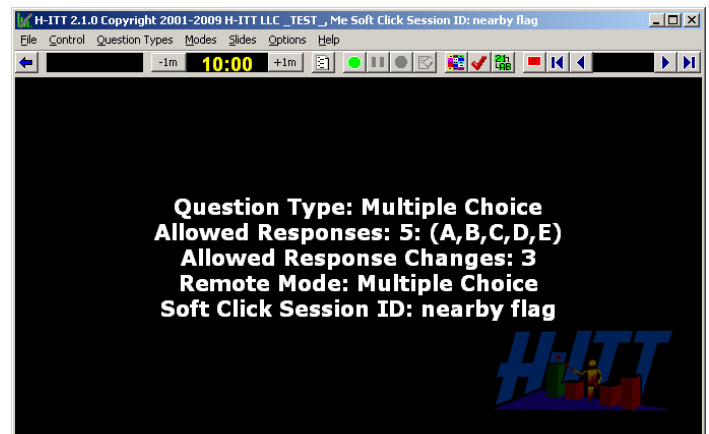


### Where to find the Session ID and Remote Mode:

The example to the right shows a typical Acquisition screen your instructor may use. The text tells you the session or homework ID you should be logged in under (in this case it is **nearby flag**).

The Question Type and Remote Mode (in this case **Multiple Choice**) are displayed to assist you in selecting the correct Remote Mode.

**You can verify** the program retrieves your answer with a visual confirmation via your ID box that should be displayed in class during questioning or answer retrieval.



Each of the following answer pallets include the text of the Acquisition screen for the correct session or homework ID as well as what remote mode you should select.

If you do not know the session or homework ID or the question type **ASK YOUR INSTRUCTOR!!**

## Multiple Choice

SoftClick

Multiple Choice

Answer

[Send](#)

Remote ID: 700004  
Session ID: nearby flag

[Home](#) | [Logout](#)

[Help](#)

© 2009 H-ITT LCC • [Full Site](#)

Enter your answer in the box and click [Send](#).

Acquisition screen:

**Question Type: Multiple Choice**  
**Remote Mode: Multiple Choice**  
**SoftClick Session ID: nearby flag**

Multiple choice responses are limited to entering A-J, or 1-0 (0=10).

Also note that the Acquisition screen may include a limit on the number of **Allowed responses** if you send an answer outside of this range it will not be received.

## Multi-Digit (fill in the blank)

SoftClick

Multi-Digit Answer

Answer

[Send](#)

Remote ID: 700004  
Session ID: nearby flag

[Home](#) | [Logout](#)

[Help](#)

© 2009 H-ITT LCC • [Full Site](#)

Enter your answer in the box and click [Send](#).

Acquisition screen:

**Question Type: Fill in the blank**  
**Remote Mode: Multi-Digit**  
**SoftClick Session ID: nearby flag**

Multi-digit answers can be up to 20 characters and are limited to: alpha (A-Z) numeric (0-9), period, space, equal sign, plus sign, minus sign, divide sign, open and close parenthesis, and the greater than less than symbols.

## TEST: Multiple Choice

SoftClick

TEST: Multiple Choice

Answer

[Send](#)

[Previous](#) [Next](#)

Remote ID: 700004  
Session ID: nearby flag

[Home](#) | [Logout](#)

[Help](#)

© 2009 H-ITT LCC • [Full Site](#)

Enter your answer for the 1<sup>st</sup> question and click [Send](#). Click Next to scroll to the next question. Your ID box in the Acquisition screen will show the question number in yellow text that you are answering. Previous lets you review that you have answered all the questions via the white number in your ID box: 0 means you have not answered that question.

Acquisition screen:

**Question Type: Multiple Choice Testing Mode**  
**Remote Mode: Multiple Choice**  
**SoftClick Session ID: nearby flag**

Multiple choice responses are limited to entering A-J, or 1-0 (0=10)

## TEST: Multi-Digit (fill in the blank)



SoftClick

**TEST: Multi-Digit**

Test#

[Next](#)

Remote ID: 700004  
Session ID: nearby flag

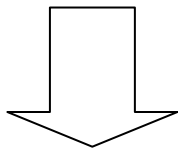
[Home](#) | [Logout](#)

[Help](#)

© 2009 H-ITT LCC • [Full Site](#)

The Multi-Digit testing mode allows you to enter a specific test number if this is enabled and provided by your instructor.

If no test number is assigned by your instructor, click [Next](#) to skip this step.



SoftClick

**TEST: Multi-Digit**

Question# 1  
Answer

[Send](#)

[Previous](#) [Next](#)

Remote ID: 700004  
Session ID: nearby flag  
Test #: 0

[Home](#) | [Logout](#)

[Help](#)

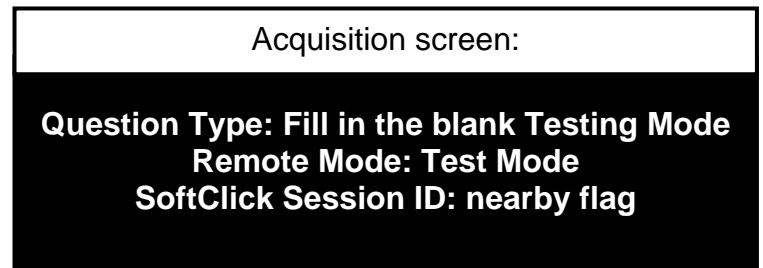
© 2009 H-ITT LCC • [Full Site](#)

Enter your answer for the question number shown and click [Send](#). The Question number will auto advance.

The previous and next button allows you to scroll through your answers for review. If your instructor allows response changes, you can scroll to any question number, edit and resend it.

Acquisition screen will show the question number in yellow text that you have answered.

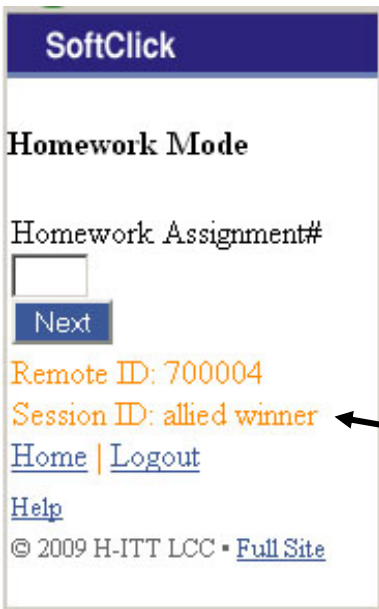
Answers can be up to 20 characters and are limited to: alpha (A-Z) numeric (0-9), period, space, equal sign, plus sign, minus sign, divide sign, open and close parenthesis, and the greater than less than symbols.



Acquisition screen:

**Question Type: Fill in the blank Testing Mode**  
**Remote Mode: Test Mode**  
**SoftClick Session ID: nearby flag**

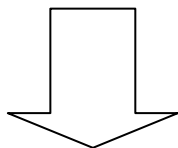
# Homework Mode



The Homework mode allows you to enter a specific homework assignment number if this is enabled and provided by your instructor.

If no homework assignment# is assigned by your instructor, click **Next** to skip this step.

**NOTE: The Homework mode uses a different ID than the standard session ID, make sure you login with the Homework ID specified by your instructor.**



Enter your answer for the question number shown and click **Send**. The question number will auto advance.

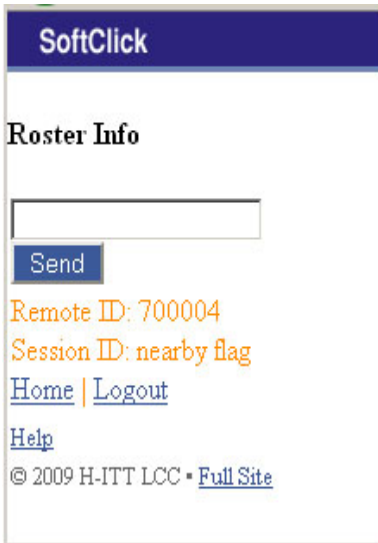
Acquisition screen:
<b>Question Type: Homework Collection Mode</b> <b>Remote Mode: Homework Mode</b> <b>SoftClick Session ID: allied winner</b>

The previous and next button allows you to scroll through your answers for review and edit. You may change your homework answers anytime prior to your instructor collecting the homework. You may log out, and re-login to resume answering your homework assignment.

When you return to class you can verify your homework has been collected via your ID box in the Acquisition screen when your instructor collects the homework assignment.

Answers can be up to 20 characters and are limited to: alpha (A-Z) numeric (0-9), period, space, equal sign, plus sign, minus sign, divide sign, open and close parenthesis, and the greater than less than symbols.

## Roster Mode



There are 3 types of “Roster Info” that your instructor may request as shown to the right.

Enter the Roster information requested by your instructor and click **Send**.

The Roster Info can be up to 20 characters and are limited to alpha (A-Z) numeric (0-9), period, space, equal sign, plus sign, minus sign, divide sign, open and close parenthesis, and the greater than less than symbols.

Acquisition screen:

**Student ID Collection Mode**  
**Send your student ID number**  
**Remote Mode: Roster Mode**  
**SoftClick Session ID: nearby flag**

Acquisition screen:

**Student Name Collection Mode**  
**Send your name**  
**Remote Mode: Roster Mode**  
**SoftClick Session ID: nearby flag**

Acquisition screen:

**Screen Name Collection Mode**  
**Send your screen name**  
**Remote Mode: Roster Mode**  
**SoftClick Session ID: nearby flag**

### User information:

Clicking [help](#) from any of the SoftClick pallets provides a description of how to use that pallet.

**The Log In pallet:** If you forgot your password you can click on the [Lost your password?](#) link from the login pallet. Upon validation a new password will be emailed to you. You can change your password from your Profile pallet.

**The Remote ID:** This number is your remote serial number that your instructor may ask you for. It is used in the H-ITT system to build a roster that associates you with the answers you give. When using SoftClick to answer questions in class, the last 3 digits of this serial number should appear in your “ID Box” that pops up (when you answer a question) in the Acquisition program being displayed.

**The Welcome pallet:** clicking on [My Profile](#) gives you some important information:

- Your license expiration date and the days remaining under the license. You should check this regularly, especially when starting a new session. Upon the expiration, you can no longer login.
- Renew Registration: Renewing your registration allows you to keep the same remote ID. You can purchase a new license key, click renew registration and enter the new key in the pop-up box.

**The Question Pallets:** Clicking the [Home](#) link from a question pallet will bring you back to the Welcome page where you can change both the session ID# and the question type selection.

Always [Logout](#) when you are done using SoftClick!