

H-ITTShow Quick Start Guide

The objective of this “Quick Start” Reference Guide is to provide the new user with the basic information required to be up and running in minimum time.

H-ITT show works with your Microsoft PowerPoint® presentation. There are 5 sections:

1. **Software installation**
2. **Hardware setup**
3. **Program setup**
4. **Running a demo**
5. **General information**

Software Installation

Insert the H-ITT CD (supplied with your base unit) in your computer. If the CD does not “auto-launch” in a few seconds, browse to your CD drive and open the file name “index.html”. From the CD, click on the H-ITTShow tab, and click on “[H-ITTShow for Windows](#)”, and download (save) the file to your computer.

Now download the USB drivers needed for your operating system. From the CD, click the link “[Click here to Get Windows USB Drivers](#)” to the right of the program you just downloaded.

NOTE: You can also download this software from H-ITT.com from the Downloads link.

Install the USB drivers: Browse to the saved file named “CDM 2.04.xx.exe” and double click on it. A window will appear indicating the Driver is installing.

Install the H-ITTShow program: Browse to the saved file named “H-ITTShowSetup701.exe” and double click on it to install the program. Follow the install wizard, and click finish when completed.



Once installed you will see a new Icon appear on your desktop:
(Double click on this Icon to load the program, see software section below)

Launch H-ITT Show

Hardware setup

Base Unit:

Base units collect the responses from the keypads and send them to the computer.

Connect the base unit with the USB cable supplied. When the base unit is first connected to your computer a “found new hardware” wizard may appear from the system tray, which will locate the USB drivers you installed, and then say “new hardware is ready to use”.

Keypads:

Keypads are used to send responses to the base units.

1. Unpack the keypad and remove the battery cover.
2. Install batteries in keypads. See keypad installation manual.
3. Press each key and check that the red light lights up* on the clicker.

NOTE: If the base unit is connected (powered up) then the light will immediately turn green letting you know the base has received the signal. If you have an IR system, you must point the clicker at the base unit.

Program setup

1. **Load the Program** - If default startup options were selected during installation, the program should already be loaded, and available from your Windows bottom system tray (on the lower right hand side of your Taskbar) of your computer monitor as shown to the right.



H-ITTShow

If the H-ITT Icon is not visible in the tray, launch the program from the desktop icon “Launch H-ITTShow”, or go to Start-All Programs-H-ITT-H-ITTShow-Launch H-ITTShow. The H-ITTShow Flash Screen will momentarily appear and the H-ITT Icon will be displayed in the system tray.

2. **Test remote keypads** - Click the H-ITTShow Icon in the Windows Tray, the H-ITTShow Command Menu will appear (fig 3.1) and display 5 Main categories, click the Options selection. The Keypad Tab (fig 3.2) will appear and is used to test the remote keypads to ensure communication with the hardware and program is operational.

First verify “Keypad Type” is set to H-ITT.

Next select the Com Port the base units is connected to. (See trouble shooting below if you do not know which Com Port the base is connected to).

Click TEST and the Test Result Window will display a vertical string of keypad #'s specified in the “Total Number of Keypads” parameter. To send a test signal to the program, press the "1/A" key on a H-ITT keypad. The keypads unique serial number will display as each unit is tested.



Fig 3.1, Command Menu

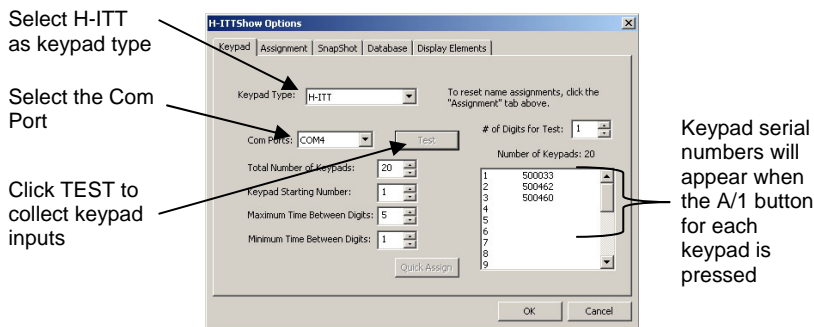
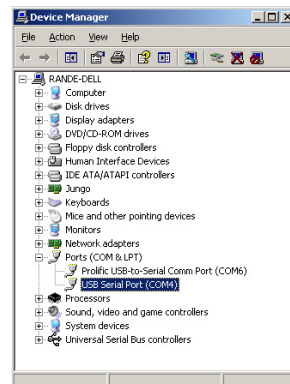


Fig 3.2, Keypad Tab Options

Troubleshooting notes:

You can identify which Com Port the base unit is connected to from your Windows Device Manager (this may require administrative privileges). To access your Device Manager, Click Start, point to Settings, and then click Control Panel. Double-click System. On the Hardware tab, click on Device manager. The Com Port will be labeled “USB Serial Port (COMx)” as shown to the right.



Alternatively you can change Com Port settings to find the one that responds to the above test. If you “test” a Com Port, and do not get responses, click OK, and re-open the Options pallet, select a different Com Port and test it. This may be necessary more than once depending on how many alternate Com Ports available.

NOTE: H-ITTShow will not work with Com Port numbers above COM 9. You can re-assign the Com Port number, from Windows Device Manager, double click the Com Port, and select the Advanced button from the Port Settings tab, select a number less than 10 from the pull down menu.

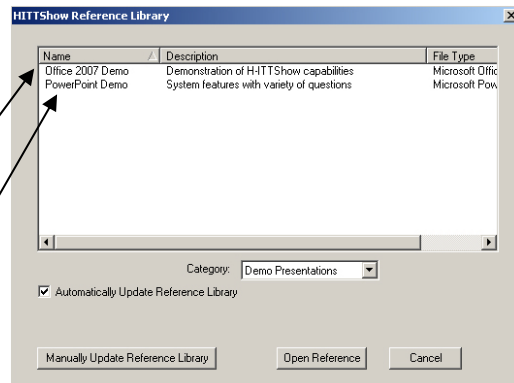
Run the H-ITTShow demo

The first step to learning H-ITTShow is by running a “demo” from the reference library. Click the command menu and select Reference Library. Two Demo PPTs are available:

If you are using Office 2007, click the Office 2007 demo.

For previous versions of Office, Click the PowerPoint® Demo

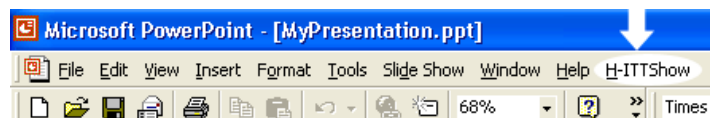
NOTE: If you are using Microsoft office 2007, the Graphical results will not work properly so results are shown as percentages.



NOTE: For Office 2007, the H-ITTShow plug-in is located under the “Add-ins” tab. For XP and prior it is located here

Double click the desired demo to open it. Verify that the PPT Standard (upper) tool bar has the H-ITTShow “Add-in” button on the right side

This verifies the program is installed correctly.



The key to H-ITTShow is the slide Author in your PPT that works with the tilde commands and makes the slide interactive with keypad responses. The Author is the H-ITT Icon, typically located in the top left corner of authored slides. Access the authoring functions by double clicking on the “Author” Icon on the slide. A good way to learn about how to “Author” your slides is to open and step through the Author (press the next button) for slides in the demo. You will “see” how question slides, group slides, assignments and others are Authored.

If you move through the Demo PPT in the design mode, you will see “tilde” command codes are visible. When you run, or play the PPT, these boxes will not show the tilde codes but will provide various data and information based on keypad responses. In addition, authored slides typically have animation that pops up with a mouse click which reveal things like the results after all keypads have responded.

NOTE: If you can see the tilde codes in the run mode, it means the page is not authored correctly, or the program was not launched properly. Verify the authoring set up, or exit the program from the bottom tray, and re-launch from the desktop Icon, and retest to ensure keypads are responding.

The Operational category of the reference library contains pre-authored question template slides called pop-ins, and “clip” components

General Information

The Reference Library: There are 3 categories; 1) the Demo PPTs, 2) Operational which contains pre-authored templates called popins and clip components like status marquees and results graphs that you can copy and paste into your PPT for customization, and 3) support information. Access the Reference library from the Command Menu>Reference Library tab.

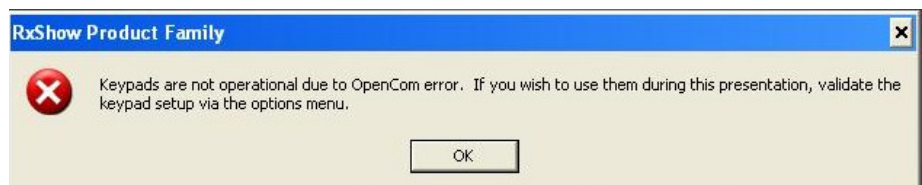
About “registration” and Name Assignments: In a classroom environment you will want to associate students’ names with the keypad serial number they are using. This is done by creating the name assignments slide and locating it in the first part of your PPT before interactive question slides. For details see “Examples and instructions for name assignments” from the operational category in the Reference library.

About the Total Number of Keypads: Select the total number of keypads to be used in your class from the Options > keypad tab. NOTE: This is a Global parameter and H-ITTShow must be closed down and restarted after a new value is input in order for the changes to take effect. To shut down H-ITTShow, click Exit in the Command menu. Re-Launch H-ITTShow from your Desktop or Programs Menu.

Reporting: A spreadsheet of the results of responses is generated when the PPT is stopped. If your slide is Authored to “save to Database” you can access responses and grades from the Reporting tab of the Command menu.

NOTE REGARDING RUNNING SLIDE SHOWS WITHOUT BASE RECEIVER CONNECTED:

When H-ITTShow is loaded (the H-ITT Icon is displayed in the Windows Tray) without the Base Receiver connected, or if the USB drivers are not installed, or if the correct Com port is not selected, this warning screen may be displayed:



NOTE: The most common problem here is that the correct Com port is not selected. Test as described above to make sure the Com Port selected from the options>keypad menu is correct. Typically it will be Com3, Com4, etc up to Com9 depending on which USB port the base unit is connected to. NOTE: H-ITT show will not work with Com ports above Com9. Serial connection typically shows up as Com1 or Com2.